

P-Plasma Pen(4 in 1)



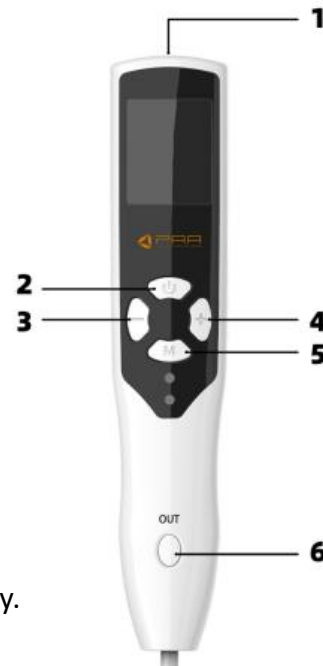
INSTRUCTION

INTERFACE DESCRIPTION	1	MAINTENANCE&REPAIR	5
SAFETY PERFORMANCE	2	WARNING	6
OPERATION	3	ACCESSORIES	7
FUNCTION	4	WARRANTY	8

Function: P-Plasma is induced into tissues for heat, sterilization, acne ,wrinke,spot removal and lifting

INTERFACE DESCRIPTION

- 1, USB power adapter interface
- 2, Power on button
- 3, Energy reduction button
- 4, Energy increase button
- 5, Mode selection button
- 6, Energy launch button



1, Equipment features

1.1, Type:

This unit is powered by a rechargeable power supply.

1.2, Function:

The high-frequency current generated by this machine can cut and carbonize Biological tissues and is suitable for skin beauty.

1.3, The implementation of standards: GB36419-2018

2, The main purpose and scope of application

Skin beauty: ozone rejuvenation, bactericidal anti-inflammatory, acne, common warts, senile warts, flat warts, infectious soft palate, warts, sebaceous glands, granuloma, millet rash, phlegm, phlegm, skin pigments, various pigments, corns, cockroaches, freckles, etc.

3. Environmental requirements and working conditions

The use environment and working conditions are as follows: Ambient temperature: 0 °C - 40 °C

Relative humidity: 45% - 77% (no condensation)

Atmospheric pressure: 70kPa ~ 106kPa

Applicable power supply: AC100V-240V \pm 22V

Power frequency: 50Hz ~ 60Hz \pm 1Hz

4, Safety performance

Rated operating frequency: 100KHz \pm 5%

Maximum output power: 10W (peak), the limit is no more than 18W

Built-in power supply: 2 x 3.7V/1000mAH polymer lithium battery

LCD screen: 24-bit color 1.77-inch TFT

Power adapter output voltage: 12V

Power adapter output current: 1.5A

Power adapter supply voltage: AC100V-240V \pm 22V

Power adapter power supply frequency: 50Hz ~ 60Hz \pm 1Hz

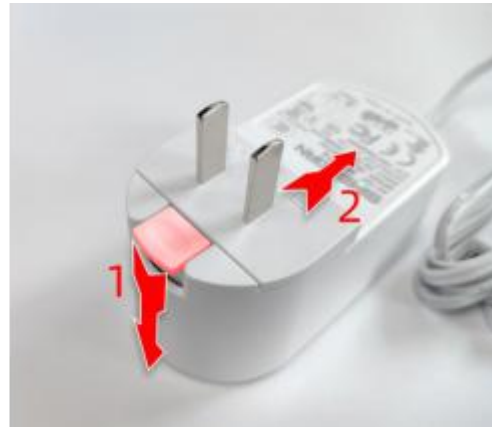
Product weight (kg): 1.3 (including the package)

Packing size (mm): 306x243x70

5, Installation & Commissioning



Method of Power adapter adapter installation



Method of Power adapter adapter removal



1) Charging display

2) Operation countdown time
(default 10 minutes)

3) Energy intensity display

4) Mode display

5) Start up status display

6, Matters Needing Attention

6.1. Read this manual carefully before operating this equipment. The operation must be in strict accordance with the requirements of this manual.

6.2. Special accessories and connecting wires produced or supplied by the company must be used, and cleaned, disinfected, connected and used as required by the instructions.

6.3. Do not use in the environment where flammable or explosive materials are present. It is recommended to use non-flammable disinfectant and anesthetic agent; cotton wool fabric should not be too close to the electrode and operating area.

6.4. Patients with cardiac pacemakers are forbidden to use, because current may interfere with the pacemaker to make the work abnormal or even stop. Accidents should be contacted by the cardiologist and take reliable precautions.

6.5. To prevent possible interference with other electrical equipment, it is recommended to use anti-jamming equipment or take anti-interference measures.

7, The Method of Operation

7.1, Charging

Connect the charger to the rear of the product, then connect the power supply. Generally, it can be used for 2 to 5 hours when fully charged.

7.1, Charging

Connect the charger to the rear of the product, then connect the power supply.

Generally, it can be used for 2 to 5 hours when the battery is fully charged.



7.2, Operation

a) Do not need to connect to the power adapter

b) Ozone skinning mode must be connected to the power adapter operation

a) Tip 1: According to the actual operation, choose the appropriate energy low gear, the low gear is generally for the skin pigment with lighter color. The high-energy gear is aimed at dark spots or sputum, the meat of the epidermis, etc. When the operation is turned on, the energy switch button is pressed, the indicator light is on, and the needle is close to the skin for about one millimeter to automatically release energy.

b) Tip 2: The relationship between the electrode tip and the target tissue is: the spacing is large, the spark will be dispersed, the liquid will be quickly lost, and the stratum corneum will be dry. In operation, the dry cornea can be wiped off at any time by using a physiological saline cotton ball, which is convenient for observing the progress of the operation and avoiding the weakening of the insulation of the carbonized layer. When the pitch is small or even no spacing, the target tissue becomes a conductor completely, so that the electrode and the target tissue cannot generate current spark power, which makes the cutting slow and the hemostatic effect is not good. Make a slight distance between the electrode and the tissue.

c) The relationship between the thickness of the electrode and the tissue to be manipulated is: when the cross-sectional area is large, the spark is scattered, the wound is large, the ability is poor, and the smaller the cross-sectional area, the more concentrated the spark is, the cutting force is strong, the wound is small, tidy, and the repair is fast. It is ideal to use a thinner electrode, because of its small cross-sectional area, good toughness, and plasticity, which is easy to bend into different angles and adapt to various parts of operation.

d) Ozone function: The oxygen in the air is generated by high-frequency electric ions to generate ozone. Ozone acts on the cell membrane of bacteria, causing damage to the membrane components, destroying lipoproteins and lipopolysaccharides in the membrane, altering cell permeability, causing cell lysis to die, thereby killing bacterial fungi and aphids in a very short period of time, and Inhibition of inflammation, acne effect is obvious. More importantly, ozone is reduced to oxygen after sterilization, and there is no residue or secondary pollution.



e) Skin Rejuvenation: Accelerate skin metabolism, promote collagen regeneration, and alleviate skin aging. Relieve skin itching caused by allergies and dryness. It inhibits melanin, brightens skin tone, delicate skin texture, shrinks pores, improves skin elasticity, anti-aging and improves allergic dermatitis.



7.3. Cleaning and disinfection of accessories

- Reusable charger, (handle) operating head, should be kept clean to prevent corrosion and pollution.
- Cleaning and disinfection of the freckle operation head: clean before use, clean the blade or sandpaper, rub and scrape, remove the carbide in the front section and soak it with disinfectant.
- Ozone rejuvenation operation head cleaning and disinfection: use sterile cotton aphid to remove venom wipe and keep the operation head dry without residual liquid

7.4, Transportation and storage conditions

This machine is an electronic instrument type equipment, and it must not be seriously vibrated, collided or rained during transportation.

Transportation shall comply with the requirements indicated in the GB/T 191-2008 package storage and transportation icon;

Storage environment temperature: 0 ° C ~ 55 ° C,

Relative humidity: 45% - 77% (no condensation),

Atmospheric pressure: 70kPa ~ 106kPa, no corrosive dust.

7.5, unpacking and inspection

- After unpacking, first check whether the host is in good condition. If there is any damage, please report the manufacturer immediately or through the dealer, otherwise the warranty will be lost; then check whether the accessories that are randomly configured by the machine are complete;
- After the user has punched the package, the integrity and integrity of the host, accessories and random files should be checked.

8, Maintenance and repair

Do not use the instrument in the following environments:

high temperature and humidity environment;

a Dusty environment;

There is a banquet with a lot of water vapor;

If there is a fault during use, the power should be turned off immediately. It must

be disassembled, repaired by a professional, or sent to a dealer or factory for repair.

Liability exemption

The manufacturer is not responsible for any of the following circumstances:

- 1) Because of fire, earthquake, war and other irresistible circumstances;
- 2) Due to user's fault, wrong operation;
- 3) Damage caused by the use of methods other than those described in this manual;
- 4) Failure to follow the instructions in this manual.

When using the instrument, please do not approach the wall and keep the space around

9、Warning



Please follow the relevant laws and regulations and do not use the instrument in the following environments.

If the gas station or chemical warehouse is near the storage of inflammable and explosive oil and gas or chemicals, it is strictly forbidden to use the instrument.

Do not use in hospital operating rooms, emergency rooms, or intensive care units.

Product toxic and hazardous substances declaration							
Number	Name of spare parts	Hazardous substance or element (○ or ×)					
		(Pb)	(Hg)	(Cd)	(Cr(VI))	(PBB)	(PBDE)
1	Plastic parts	○	○	○	○	×	×
2	Hardware structure / decorative parts	×	○	○	○	○	○
3	Board assembly	×	○	○	○	○	○
4	Power Line	×	○	○	○	○	○
5	Plug	×	○	○	○	○	○
6	Relay	○	○	×	○	○	○

When avoiding lightning strikes during thunderstorms, do not use outdoors.

Do not use in high humidity areas such as bathrooms, as this may result in electric shock, personal injury, fire and electrical damage.

Please comply with the relevant laws and regulations that clearly prohibit the use of the operation in any environment.

10、Safety and environmental precautions

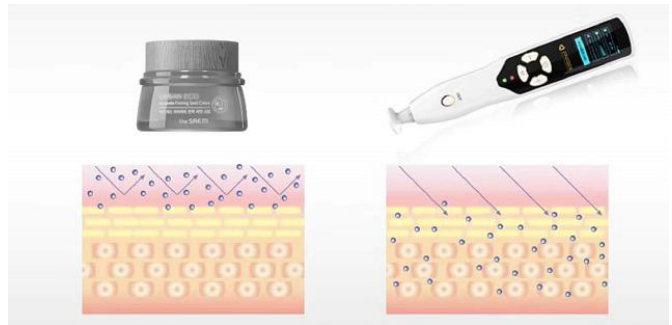
o: Indicates that the content of this toxic and hazardous substance in all homogeneous materials of this part is below the limit requirement stipulated in SJ/T-11363-2006 "Limited Requirements for Toxic and Hazardous Substances in Electronic Information Products".

x: indicates that the content of the toxic and hazardous substance in at least one of the homogeneous materials of the part exceeds the limit requirement specified in SJ/T11363-2006.

#: When the product is disposed of after proper consumption, it is hoped that it will be disposed of in accordance with the recycling guidelines of electronic information products and in accordance with laws and regulations.

Technical statement:

The hardware components, injection molded parts, connectors and most of the electronic components of the machine comply with the requirements of the EU RoHS Directive. Only a few components may not affect the reliability of the product due to global technical limitations, and the replacement of toxic and hazardous substances or elements is not realized. Please use the product with confidence, it will not affect the user's health under normal use conditions.



Accessories List

Name	PIC	Quantity
Main Box		1
Instrument		1
Power Adapter		1
Power converter USA	 USA	1
	 UK	1
	 Europe	1
Ozone 3#		1
Ozone 2#		1
Ozone 1#		1
Gold Needle		1
Long Tin Needle		3

Warranty

This product is guaranteed for one year from the date of purchase.

If it is difficult to confirm the warranty period, the warranty period will be applied from the date three months after the date of manufacture.

We will repair or replace the defective product in accordance with the condition.

Damage caused by user's negligence will not be covered by warranty even if it is within the warranty period.

Repairs other than designated service centers are not covered by the warranty.

The service period will not be extended after repair or repair.