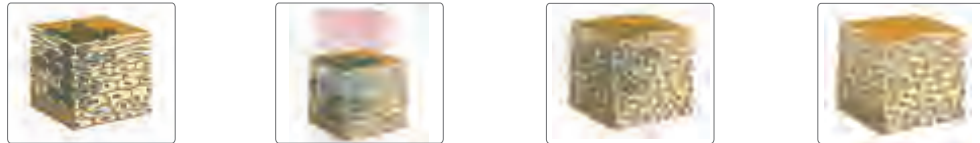


ND YAG LASER TATTOO REMOVAL MACHINE

-NBW-QLI

The Q-switched ND: YAG laser delivers light of specific wavelengths with high energy which are absorbed by the pigment in the tattoo and result in a shockwave. The shockwave shatters the pigment particles, releasing them from their encapsulation and breaking them into fragments small enough for removal by the body. These tiny particles are then eliminated by the body. Since this specific wavelength can only be absorbed by pigment particles, no injury to skin and normal tissues will occur.



Handpiece Introduction



1064nm



532nm



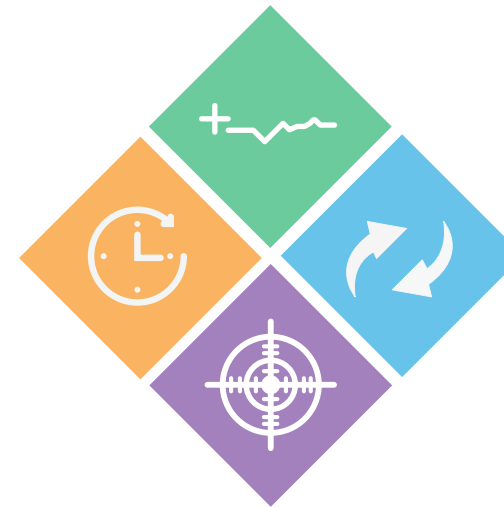
1320nm

TECHNICAL PARAMETER

Laser output method	Pulse adjusting Q
Power	800w
Wavelength	1064nm, 532nm, 1320nm
Pulse Duration	8±2ns
Frequency	1-6Hz
Single Pulse max output energy	100-2000mJ
Aiming Beam	Diode 655nm (Red) Adjustable Adjustable Brightness
Cooling manner	Closed-off water circulation + air
Voltage	AC220V±10% 10A 50HZ AC110V±10% 10A 60HZ
Net Weight	15kg
Dimension	260*430*300mm



ADVANTAGES



High quality laser source

USA imported Q switch and laser bar, Germany Heraeus Xenon lamp, Aluminium laser case

Short pulse width (8ns)

Efficient destruction of the target pigment with minimal collateral thermal damage meeting the criteria of selective photothermolysis

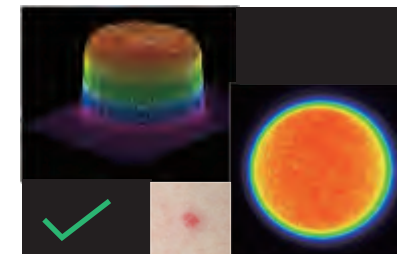
High Energy

2000 mJ High Single Pulse width energy means strong ability to crushes the pigment

Flat-top hat Beam

Ensure that the energy is delivered efficiently to maximize effect while minimizing damage on surrounding tissue

TOP HAT BEAM



Top hat beam



Gaussian beam

SCOPE OF TREATMENT

TATTOO REMOVAL

Permanent Makeup and All Colors Tattoo Removal

Pigmented Lesions Treatment

Nevus of Ota, birthmark, Sun Spot, Coffee Spot, Age Spot, Freckle

Skin rejuvenation

Oil control, Skin Whitening, Enlarged Pore Treatment, Carbon Laser Skin Rejuvenation

BEFORE & AFTER

